

# **A1 in Northumberland: Morpeth to Ellingham**

**Scheme Number: TR010041**

## **6.6 Environmental Statement – Figure 11.5 Potential Contamination Sources**

### **Part B**

APFP Regulation 5(2)(a)

Planning Act 2008

Infrastructure Planning (Applications: Prescribed  
Forms and Procedure) Regulations 2009

June 2020

## Infrastructure Planning

### Planning Act 2008

### **The Infrastructure Planning (Applications: Prescribed Forms and Procedure) Regulations 2009**

## **The A1 in Northumberland: Morpeth to Ellingham Development Consent Order 20[xx]**

---

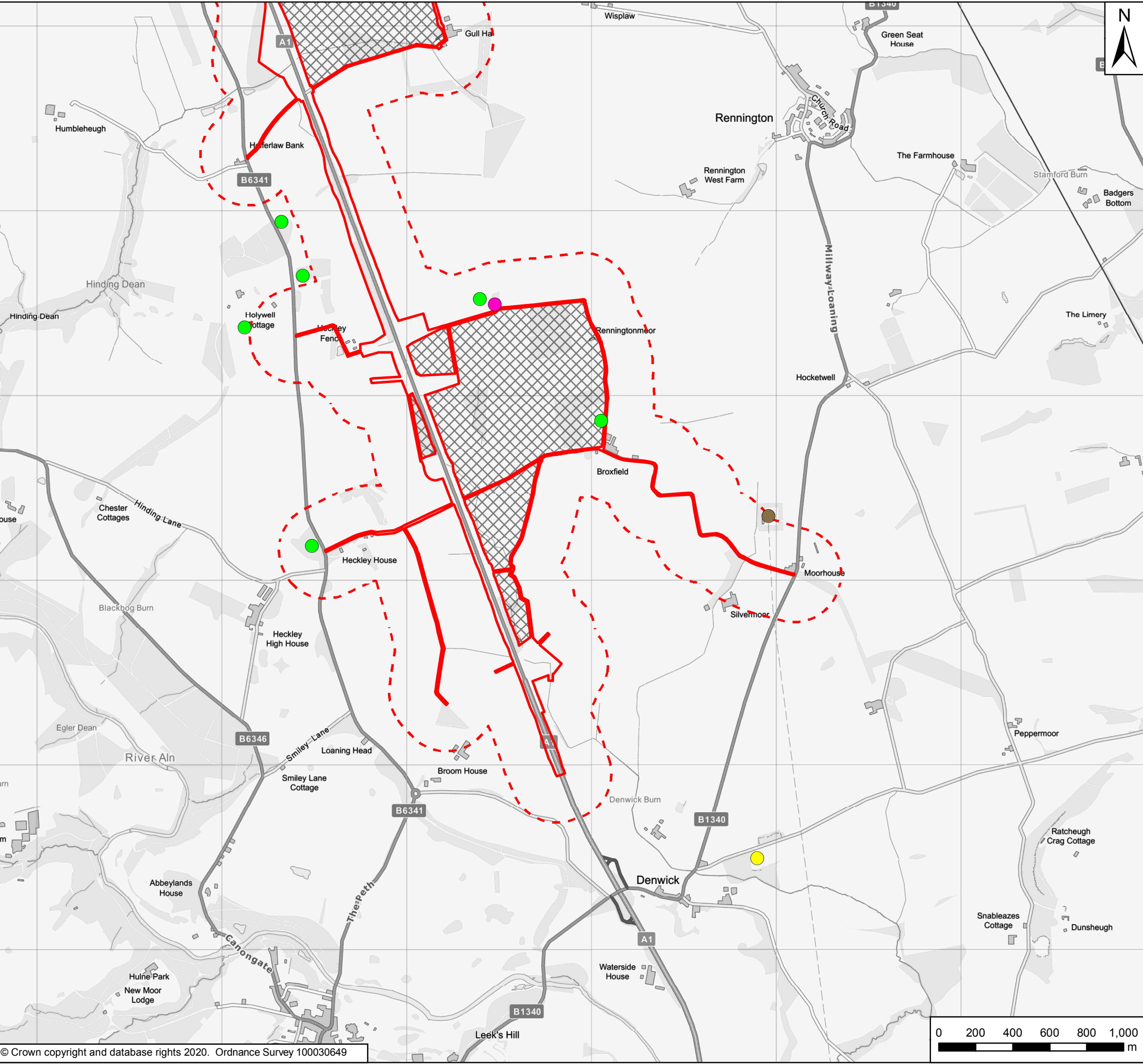
### **Environmental Statement – Figures**

---

<b>Regulation Reference:</b>	APFP Regulation 5(2)(a)
<b>Planning Inspectorate Scheme Reference</b>	TR010041
<b>Application Document Reference</b>	TR010041/APP/6.6
<b>Author:</b>	A1 in Northumberland: Morpeth to Ellingham Project Team, Highways England

<b>Version</b>	<b>Date</b>	<b>Status of Version</b>
Rev 0	June 2020	Application Issue

Document Path: \\uk.wspgroup.com\central data\Projects\700380xx\70038006 -A1 in Northumberland\02 WIP\EI EIA and flood risk\02 Drawing\Env Statement\ES Figures Rev P03\Figure 11.5 - Potential Contamination Sources.mxd Date Saved: 26/06/2020 09:51:17 User Name: UKGDH001

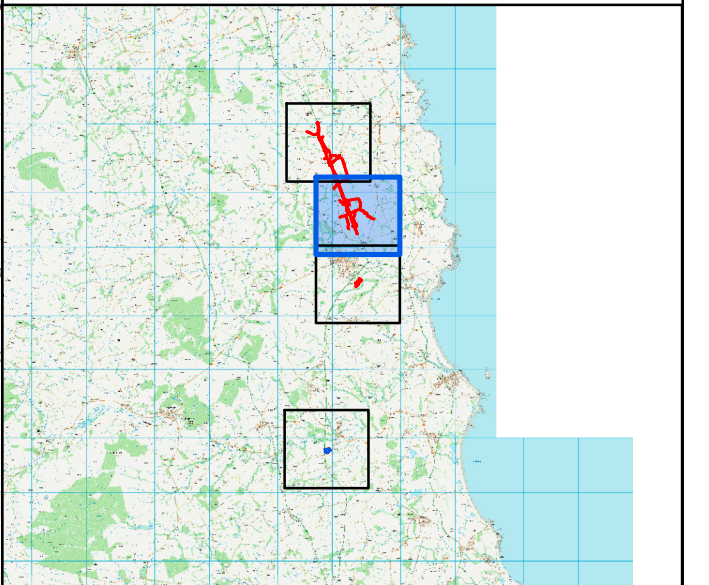


**Key**

- Order Limits
- Areas Excluded from Order Limits
- Main Compound
- 250m Study Area

**Potential contamination sources**

- Electricity substation
- Eshott Airfield
- Former coal pit
- Former corn mill
- Former limekiln
- Former smithy
- Former tramway
- Historical landfill
- Made ground associated with infilled historical quarries, pits and ponds



P03	June 2020	Third Issue	GH	VW	KS
P02	09/12/19	Second Issue	GH	VW	KS
P01	31/07/19	First Issue	GH	VW	KS
Rev	Date	Description	By	Chk'd	App'd

Client

Project Title  
A1 in Northumberland: Morpeth to Ellingham

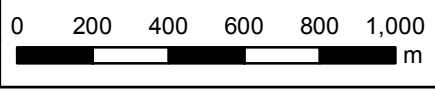
Drawing Title  
Figure 11.5 Potential Contamination Sources  
Page 1 of 4

Scale 1:20,000	Drawn GH	Checked VW	Approved KS	Authorised DM
Original Size A3	Date 31/07/19	Date 31/07/19	Date 31/07/19	Date 31/07/19

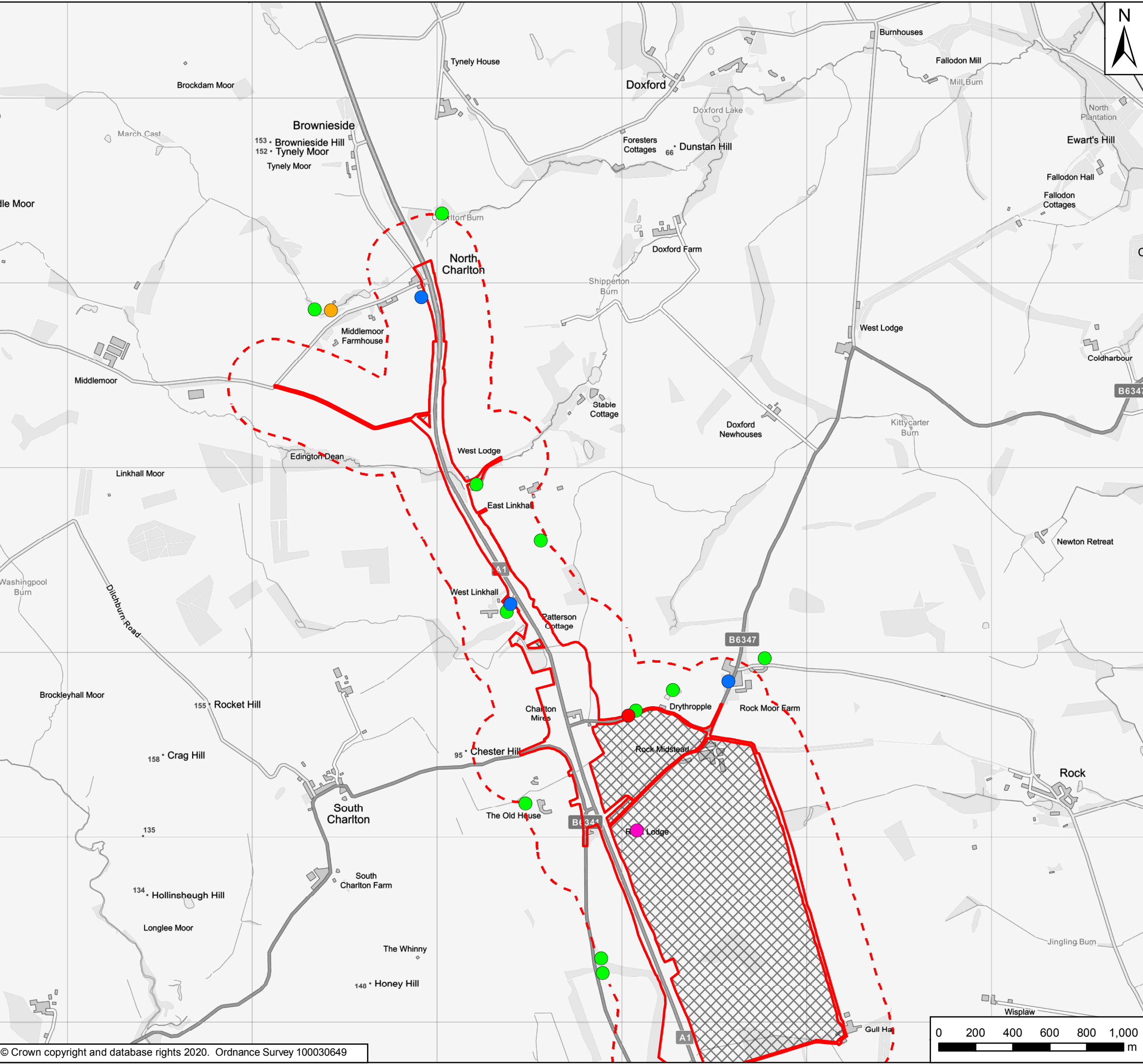
Drawing Status  
For Information

Suitability  
S1

Drawing Number Project HE551459	Originator WSP	Volume 6.6	Project Ref. No. 70044137
A2E Location	RP Type	LE Role	2130 Number
			Revision P03





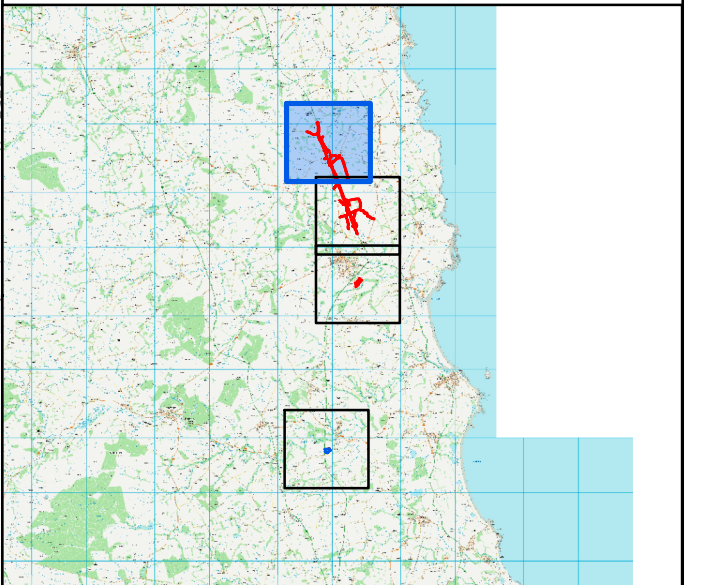



**Key**

- Order Limits
- Areas Excluded from Order Limits
- Main Compound
- 250m Study Area

**Potential contamination sources**

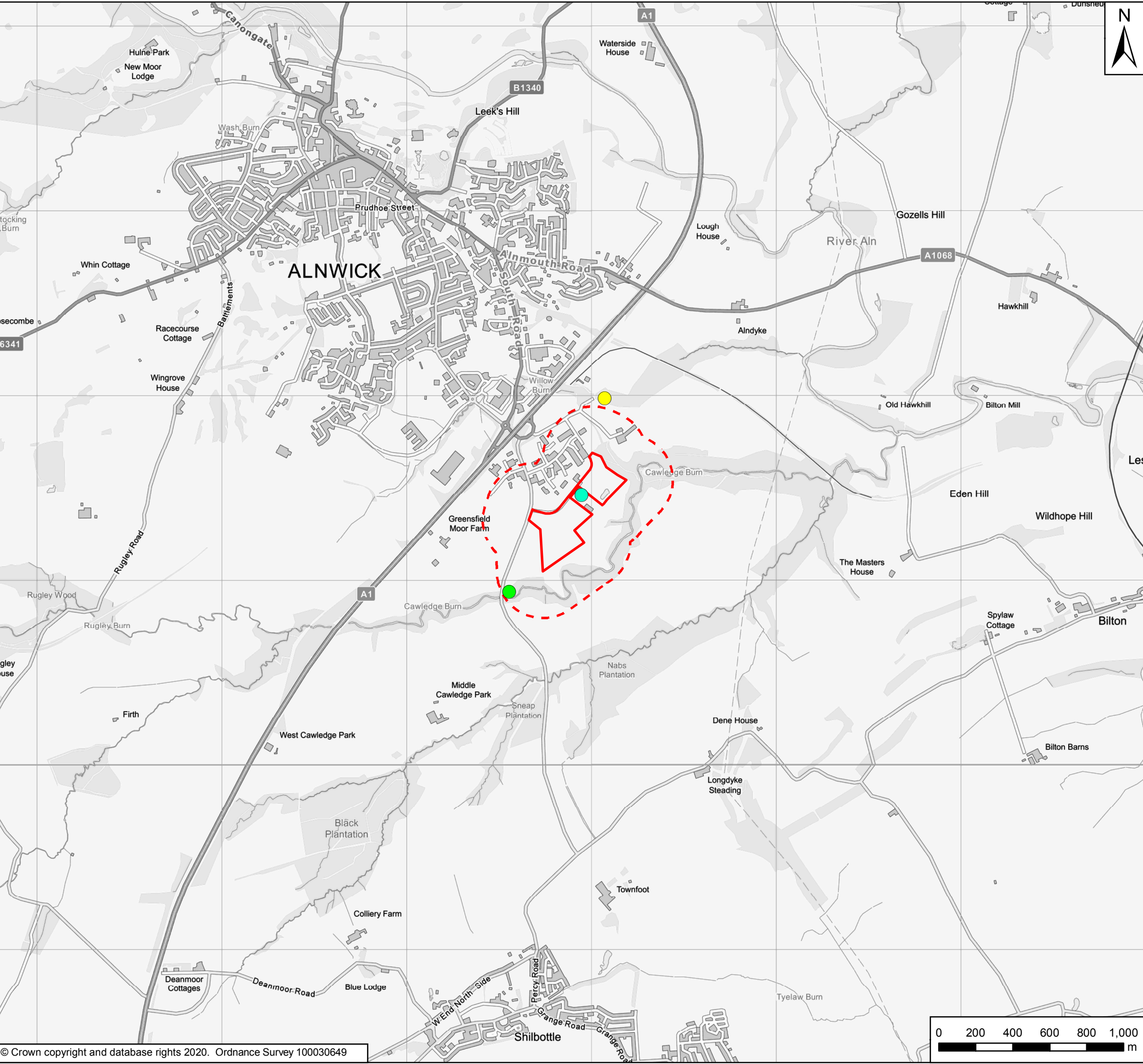
- Electricity substation
- Eshott Airfield
- Former coal pit
- Former corn mill
- Former limekiln
- Former smithy
- Former tramway
- Historical landfill
- Made ground associated with infilled historical quarries, pits and ponds



P03	June 2020	Third Issue	GH	VW	KS
P02	09/12/19	Second Issue	GH	VW	KS
P01	31/07/19	First Issue	GH	VW	KS
Rev	Date	Description	By	Chk'd	App'd
Client					
<div></div>					
Project Title					
A1 in Northumberland: Morpeth to Ellingham					
Drawing Title					
Figure 11.5 Potential Contamination Sources Page 2 of 4					
Scale	Drawn	Checked	Approved	Authorised	
1:20,000	GH	VW	KS	DM	
Original Size	Date	Date	Date	Date	
A3	31/07/19	31/07/19	31/07/19	31/07/19	
Drawing Status				Suitability	
For Information				S1	
Drawing Number			Originator		Volume
Project			WSP		6.6
HE551459					
A2E			RP	LE	2130
Location			Type	Role	Number



Date Saved: 26/06/2020 09:51:17 User Name: UKGDH001  
Document Path: \\uk.wspgroup.com\central data\Projects\700380\A1 in Northumberland\02 WIP\EI EIA and flood risk\02 Drawing\Env Statement\ES Figures Rev P03\Figure 11.5 - Potential Contamination Sources.mxd

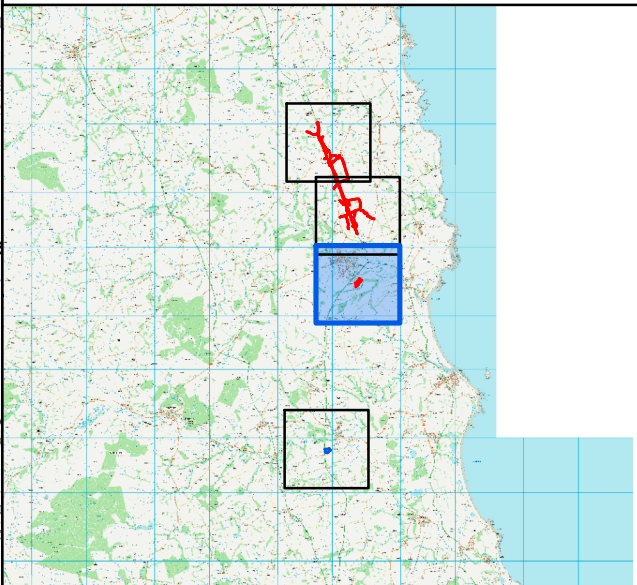



**Key**

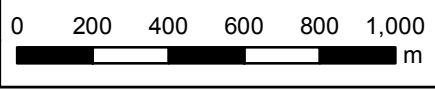
- Order Limits
- Areas Excluded from Order Limits
- Main Compound
- 250m Study Area

**Potential contamination sources**

- Electricity substation
- Eshott Airfield
- Former coal pit
- Former corn mill
- Former limekiln
- Former smithy
- Former tramway
- Historical landfill
- Made ground associated with infilled historical quarries, pits and ponds

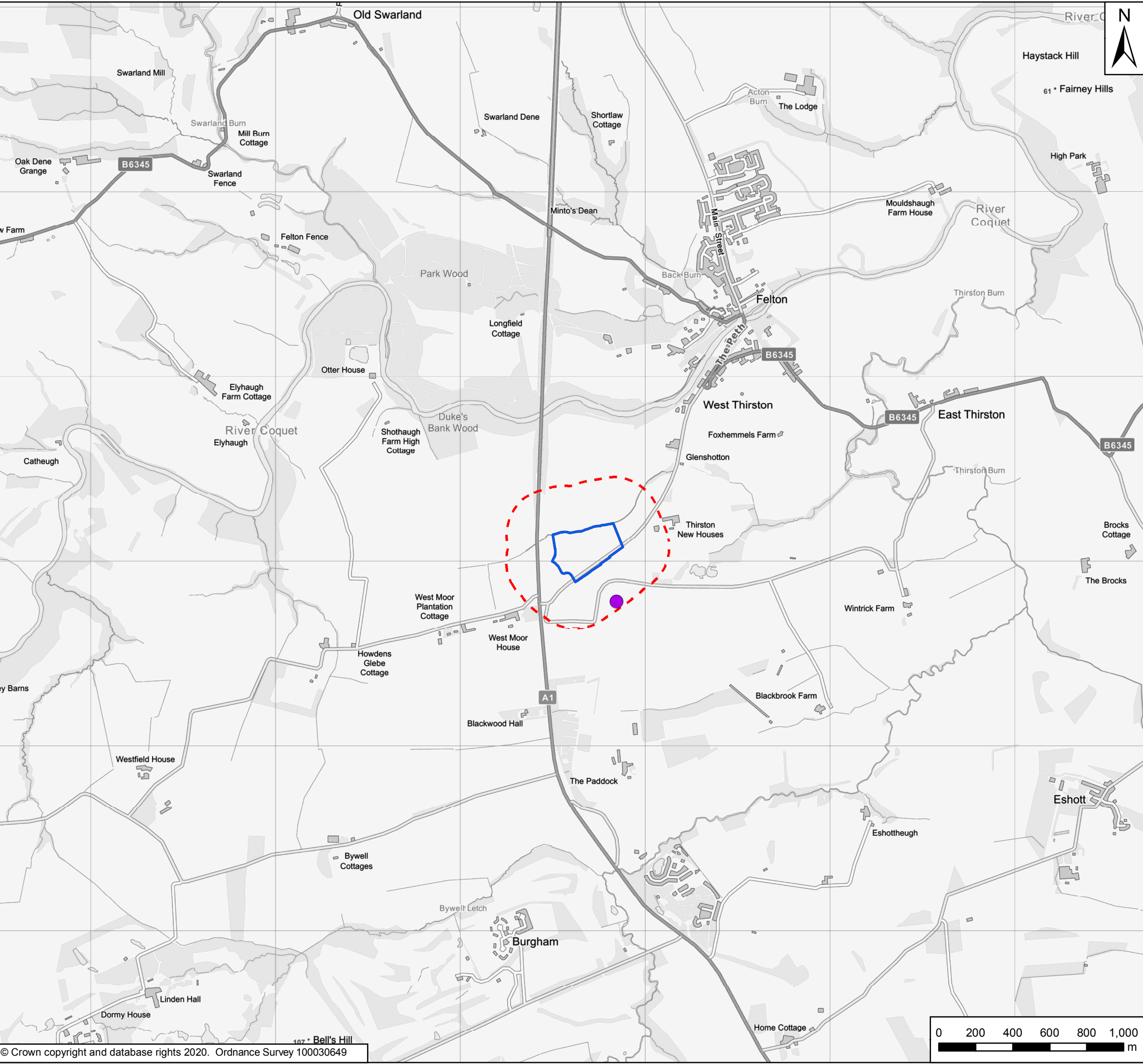


P03	June 2020	Third Issue	GH	VW	KS
P02	09/12/19	Second Issue	GH	VW	KS
P01	31/07/19	First Issue	GH	VW	KS
Rev	Date	Description	By	Chk'd	App'd
Client					
					
Project Title					
A1 in Northumberland: Morpeth to Ellingham					
Drawing Title					
Figure 11.5 Potential Contamination Sources Page 3 of 4					
Scale 1:20,000	Drawn GH	Checked VW	Approved KS	Authorised DM	
Original Size A3	Date 31/07/19	Date 31/07/19	Date 31/07/19	Date 31/07/19	
Drawing Status				Suitability	
For Information				S1	
Drawing Number Project HE551459			Originator WSP	Volume 6.6	Project Ref. No. 70044137
A2E Location			RP Type	LE Role	2130 Number





Date Saved: 26/06/2020 09:51:17 User Name: UKGDH001  
Document Path: \\uk.wspgroup.com\central data\Projects\700380\A1 in Northumberland\02 WIP\EIA and flood risk\02 Drawing\Env Statement\ES Figures Rev P03\Figure 11.5 - Potential Contamination Sources.mxd



Order Limits

Areas Excluded from Order Limits

Main Compound

250m Study Area

Potential contamination sources

Electricity substation

Eshott Airfield

Former coal pit

Former corn mill

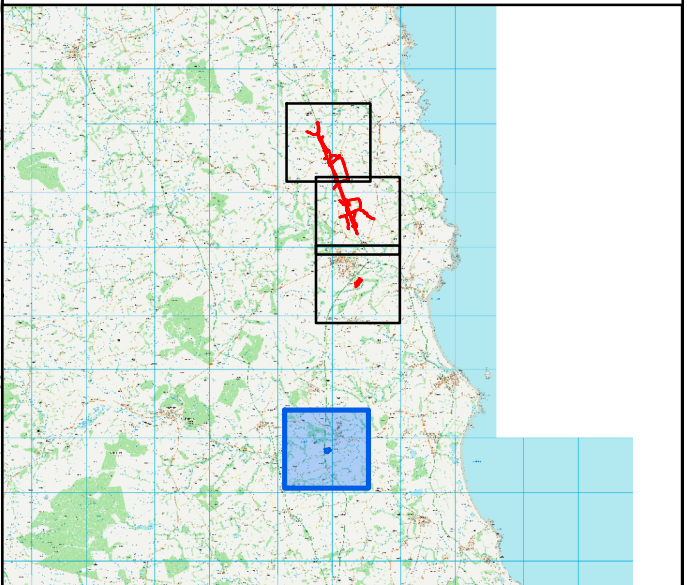
Former limekiln

Former smithy

Former tramway

Historical landfill

Made ground associated with infilled historical quarries, pits and ponds



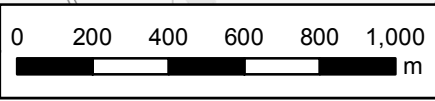
P03	June 2020	Third Issue	GH	VW	KS
P02	09/12/19	Second Issue	GH	VW	KS
P01	31/07/19	First Issue	GH	VW	KS
Rev	Date	Description	By	Chk'd	App'd

Client

Project Title  
A1 in Northumberland: Morpeth to Ellingham

Drawing Title  
Figure 11.5 Potential Contamination Sources  
Page 4 of 4

Scale 1:20,000	Drawn GH	Checked VW	Approved KS	Authorised DM
Original Size A3	Date 31/07/19	Date 31/07/19	Date 31/07/19	Date 31/07/19
Drawing Status For Information				Suitability S1
Drawing Number Project HE551459		Originator WSP	Volume 6.6	Project Ref. No. 70044137
A2E Location		RP Type	LE Role	2130 Number
				Revision P03



© Crown copyright 2020.

You may re-use this information (not including logos) free of charge in any format or medium, under the terms of the Open Government Licence. To view this licence:

visit [www.nationalarchives.gov.uk/doc/open-government-licence/](http://www.nationalarchives.gov.uk/doc/open-government-licence/)

write to the **Information Policy Team, The National Archives,**

**Kew, London TW9 4DU**, or email

[psi@nationalarchives.gsi.gov.uk](mailto:psi@nationalarchives.gsi.gov.uk).

This document is also available on our website at [www.gov.uk/highways](http://www.gov.uk/highways)

If you have any enquiries about this document [A1inNorthumberland@highwaysengland.co.uk](mailto:A1inNorthumberland@highwaysengland.co.uk) or call **0300 470 4580\***.

\*Calls to 03 numbers cost no more than a national rate call to an 01 or 02 number and must count towards any inclusive minutes in the same way as 01 and 02 calls.

These rules apply to calls from any type of line including mobile, BT, other fixed line or payphone. Calls may be recorded or monitored.

Registered office Bridge House, 1 Walnut Tree Close, Guildford GU1 4LZ

Highways England Company Limited registered in England and Wales number 09346363